

## SCR DATAFLOW™ II SYSTEM

Complete, integrated, real-time milking management and cow monitoring solution

The SCR DataFlow™ II System is a real-time solution herd management. It provides the herd manager as well as the milking pit operator with a set of tools designed to help with daily tasks and work in a more efficient and productive way.

The system provides powerful management tools, including reports, graphs, analytics, task lists and lifetime cow card history. The system also enables control and support of other components like sorting gates, individual feeding, in-parlor messaging board, and others.



## Advanced Herd Management Solution

Comprises of hardware and software, the DataFlow™ II System controls the whole milking process and automatically collects and analyzes data from the monitoring tags.

- On-line milking monitoring and milk production using SCR FreeFlow™
- Accurate heat detection and advanced health monitoring
- Graphs, reports and analysis - only the information you need when you need it!
- Daily task lists and actionable information
- Real-Time notifications including labor related alerts
- Synchronization and connectivity with 3rd party solutions



## Easy to use and flexible solution

SCR's philosophy is keeping the user interface as simple as possible avoiding complicated panels while delivering the right information at the right time.

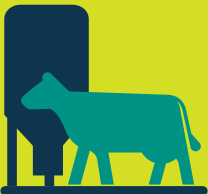
### Milking operator:

- The system presents only the exact information required for milking pit operation, at the individual SCR MC200 milking points and on a central LCD screen
- Relevant information such as sick cows, dangerous cows, or cows that are under-producing, is visible at a glance from the milking point
- The operator is able to enter information directly from the pit



### Herd Manager:

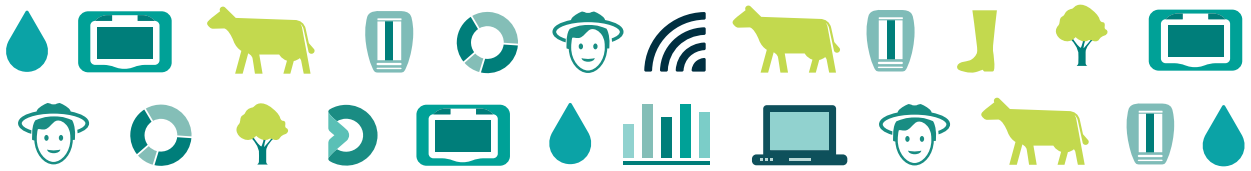
- Customizable interface, reports and graphs
- Full support for multiple users (such as herd manager, veterinarian or nutritionist), multiple herds, and different milking parlors
- All data can be accessed from distant locations, including home and mobile phone



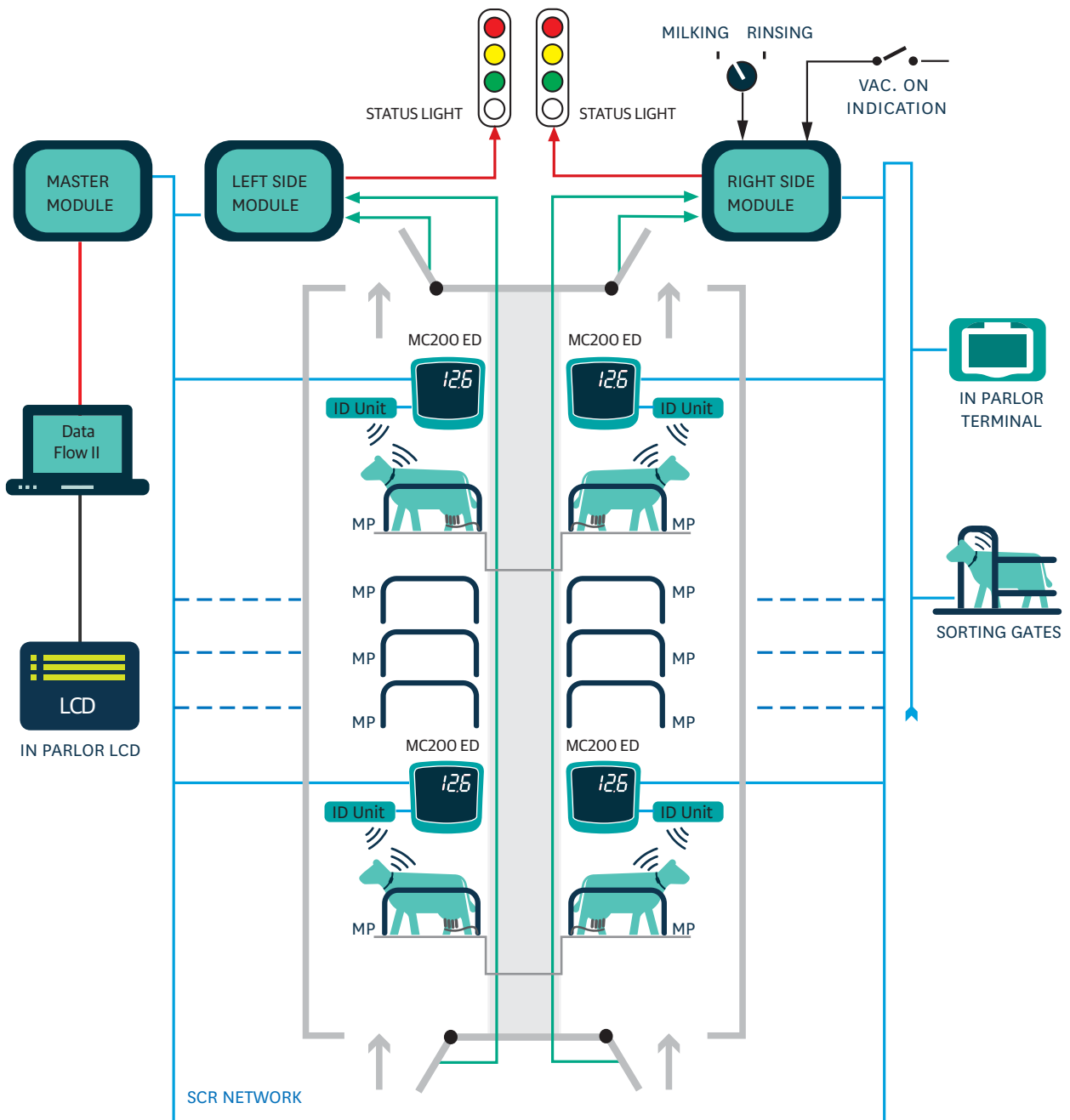
## Durable and scalable solution to protect your investment

The DataFlow II System works with SCR tags and SCR milking control systems, including the FreeFlow™ milk sensor and SCR pulsators. The system is designed for scalability so the farmer can easily expand his equipment according to the farm's needs and growth.

- Highly durable, with virtually no maintenance required
- Simple to install
- Can be easily added to any existing parlor to protect previous investments
- Upgradable – can grow with the herd and needs



### Example of system layout - side by side Parlor

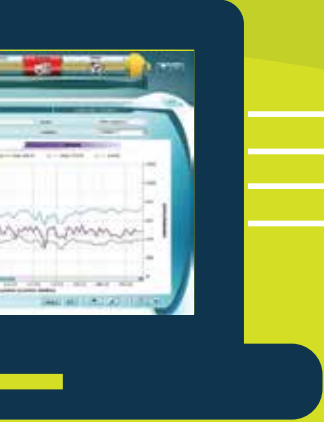


\* The above layout is for illustration purposes only. Solutions available for other parlor configurations as well (rotary, midi-line, herring bone and more)



# systems

## Out of parlor

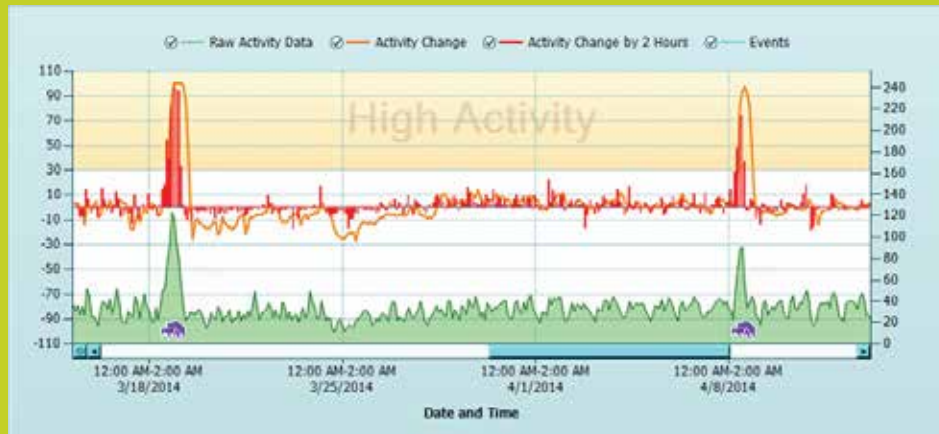


## Actionable Information

- Group & herd reports
- Milking efficiency
- Mastitis alerts
- Cows in heat
- Working lists
- Sick cows
- Farm trends
- SMS and Email alerts



## Heat detection:



The system recognizes irregular activity and rumination caused by non-heat-related external events and isolates the data from the heat detection. You can confidently handle all heat detection using just this system, without visual observation and with full peace of mind that heats are being detected

## Heat detection and health monitoring:



The system uniquely combines rumination, movement and movement intensity measurement, recognizing behavior patterns. Individually benchmarked rumination measurements are combined with the activity information, delivering exceptional heat detection accuracy by creating the classic “diamond” shape making heats even more obvious.

# user interface and reports

## Rumination monitoring:



Specific groups react to ration formulation changes or changes in the mixing or feeding protocol. Rumination monitoring, with customizable analysis and reports, provides timely and accurate insight into the effectiveness of ration or feeding changes.

## Milking control:



Real-time milking parlor management - monitoring the milking parlor enables you to follow every cow in the milking pit in real time. Comprehensive information is displayed in an easy to read reports and graphs.



[www.scrdairy.com](http://www.scrdairy.com) | [info@scr dairy.com](mailto:info@scr dairy.com)

Copyright© 2013 SCR Engineers Ltd. The information contained herein is subject to change without notice. The only warranties for SCR's products and services are set forth in the express warranty statements accompanying such products and services. Nothing herein should be construed as constituting an additional warranty. SCR shall not be liable for technical or editorial errors or omissions contained herein.

DFII\_8\_A4\_Eng\_Jul14



**SCR Headquarters**  
6 Haomanut St. Netanya  
4237782, Netanya, Israel

[info@scr dairy.com](mailto:info@scr dairy.com)  
T: +972 (0)73 2466145/181  
F: +972 (0)73 2466155

**SCR North America**  
2013 South Stoughton Rd.  
Madison, WI 53716, USA

[NAmerica@scr dairy.com](mailto:NAmerica@scr dairy.com)  
Tel: +608 237 3170/1/2  
Fax: +608 237 3173

**SCR Europe**  
Via Mattei 2, Loc-Gariga  
29027 Podenzano (PC), Italy

[screeurope@scr dairy.com](mailto:screeurope@scr dairy.com)  
Tel: +39 0523 1867200  
Fax: +39 0523 1867299

**SCR UK&I**  
Grange Road, Ellesmere,  
Shropshire SY12 9DG, UK

[scrki@scr dairy.com](mailto:scrki@scr dairy.com)  
Tel: +44(0) 1691 627100  
Fax: +44(0) 1691 627101

**SCR in China**  
6F, No.61 East Nanjing Road  
Huangpu District, Shanghai

[info@scr dairy.com](mailto:info@scr dairy.com)  
Tel: +86 21 6329 1775  
Fax: +86 21 6329 0759